

A NOTE ON FOUR OLD SPECIES NAMES IN *COLASPIS*
(COLEOPTERA: CHRYSOMELIDAE)

DORIS H. BLAKE

Department of Entomology, Smithsonian Institution,
Washington, DC 20560

In the Junk-Schenkling Catalogue of Chrysomelidae, section on Eumolpinae, there is under *Colaspis occidentalis* (Linnaeus) a number of names in synonymy; 2 of these represent valid species, and it is of these that I write. One of the 2 is *C. occidentalis*, described by Linnaeus in 1758 as *Chrysomela occidentalis*; I borrowed a specimen of this from the Lefèvre collection, Muséum National d'Histoire Naturelle, Paris. The other was described by Fabricius in 1787 as *Chrysomela flavicornis*; I borrowed the type of this from the University Museum, Copenhagen, Denmark.

Colaspis occidentalis (Linnaeus)

I give first a brief description of *C. occidentalis* (Fig. 1). It is a small beetle, about 5.8 mm long and 2.6 mm wide. Upper surface including scutellum entirely shining green; venter blue green; legs yellow brown; antennae entirely pale yellow. Head with interocular space not quite half width of head. Prothorax not twice as wide as long, sides toothed below middle, disc densely punctate. Elytra not 3 times as long as prothorax and slightly wider; punctures in single lines near suture and apex, elsewhere in alternate or double rows, with elevated dark green costae between rows. Type-locality, French Guiana. This species is smaller than most others of the group.

I also illustrate *C. flavipes* (Fabricius), originally described in *Erotylus* (Fig. 2); the type-locality of this also is French Guiana. The U. S. National Museum has 5 specimens from Cayenne, French Guiana, that strongly resemble the one in the Lefèvre collection called *C. occidentalis*—so much so that I am certain that *C. flavipes* is a synonym of *C. occidentalis*. My illustration is from 1 of these specimens; it shows not only that the beetle itself is like *C. occidentalis* but that the aedeagus is the same.

Colaspis flavicornis (Fabricius)

C. flavicornis (Fig. 3) is a larger beetle, the type-specimen about 6.5 mm long and 4.0 mm wide. Coloration similar to that of *C. occidentalis* except tip of last antennal article dark, and scutellum dark rather than shining green. Head with interocular space half width of head and densely punctate. Prothorax not twice as wide as long, sides toothed below middle, disc densely punctate. Elytra more than 3 times as long as prothorax and wider; dense punctures in double rows except near suture and apex, with well marked costae between rows. There is no indication on the type-specimen as to where it was collected.

This beetle is so like *C. prasina* Lefèvre (Fig. 4) that I believe these 2 names are synonymous. I have seen the type of *C. prasina*, collected at Fugasugo, Colombia; my illustration is of this specimen, the inset showing the form of the aedeagus. **New synonymy.**

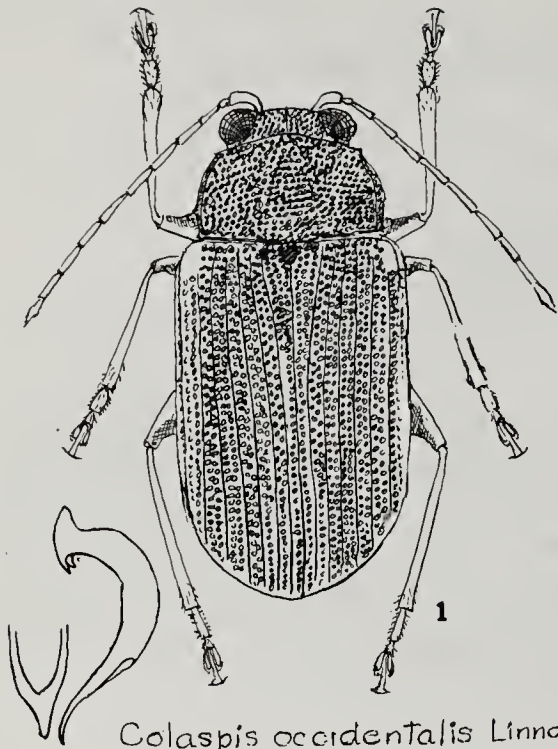
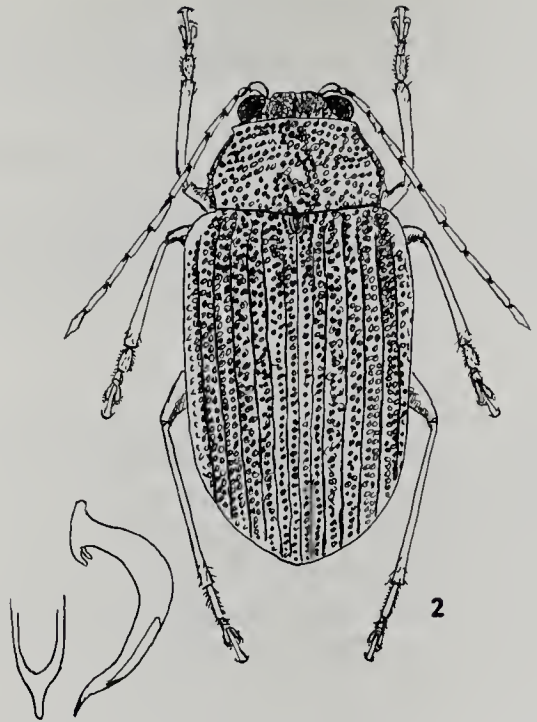
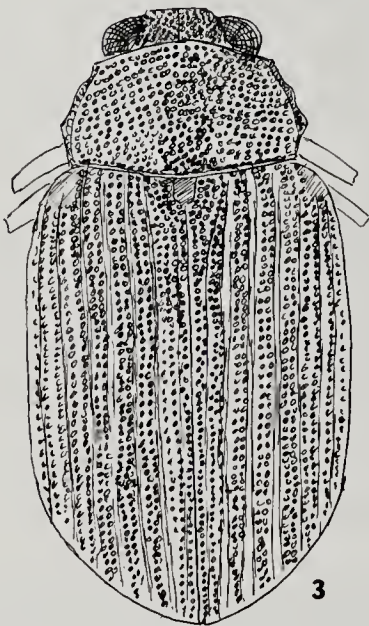
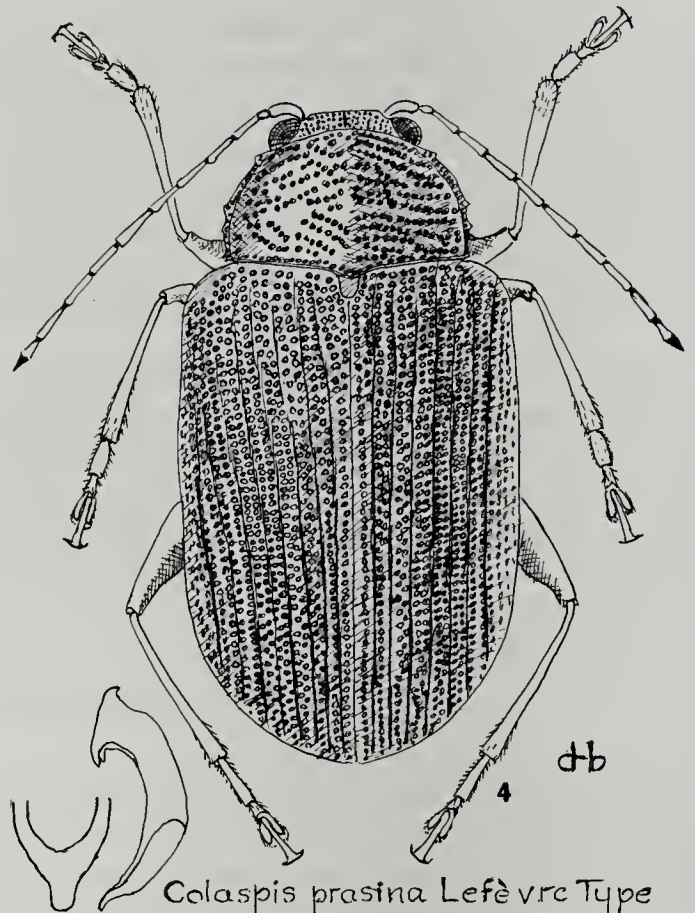
*Colaspis occidentalis* Linnaeus*Colaspis occidentalis* Linnaeus*Colaspis flavicornis* Fabricius Type*Colaspis prasina* Lefèvre Type

Fig. 1-2, *Colaspis occidentalis* (Linnaeus): 1) type-specimen, French Guiana; 2) specimen of form called *C. flavipes* (Fabricius), showing similarity in habitus and male genitalia, from Cayenne, French Guiana. These 2 names are synonyms.

Fig. 3-4, *Colaspis flavicornis* (Fabricius): 3) type-specimen, locality not known; 4) type-specimen of form called *C. prasina* Lefèvre, Fugasugo, Colombia. These 2 names are synonyms.